

# Exploring Pumpkins

Using the 5 senses.



*Today we will talk about the different parts of a pumpkin. Flip back to this page of the book and look at the picture. Cut open a real pumpkin and allow students to observe each part using a magnifying glass (separate seeds and save for Friday's lesson). **What do you notice? Let's use our five senses to describe. What does each part look like? Feel like? Smell like? Sound like? Taste like?** Make a chart. Note: for taste/smell, you can make pumpkin dip with students (see recipe on pg. 6!)*

After your students have had a chance to explore the parts of the pumpkin place the pumpkin pulp and seeds in a large Ziploc bag. Remove the air, close the bag. Use heavy duty tape to keep it sealed. Place this in your sensory center so students can continue to explore the parts of a pumpkin.

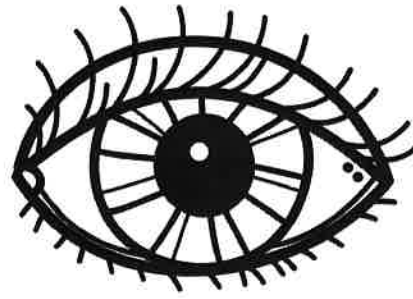
# 5 Senses

We can use our five senses  
to describe a pumpkin.

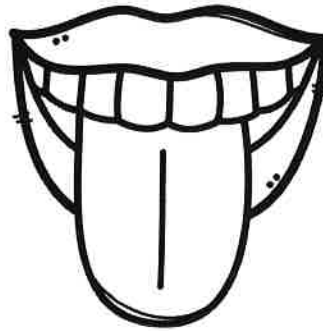


Use this header and the images on the following pages to create a  
5 Senses chart.

see



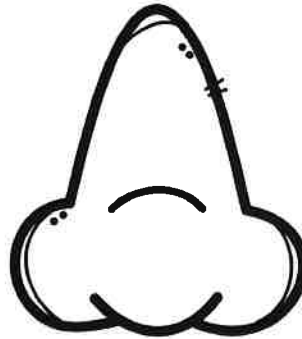
taste



touch



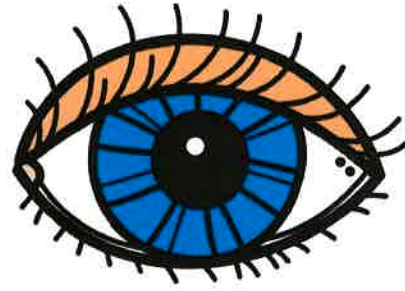
smell



hear



see



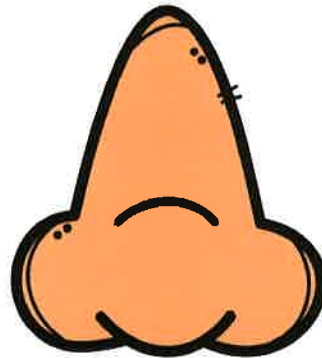
taste



touch



smell



hear

